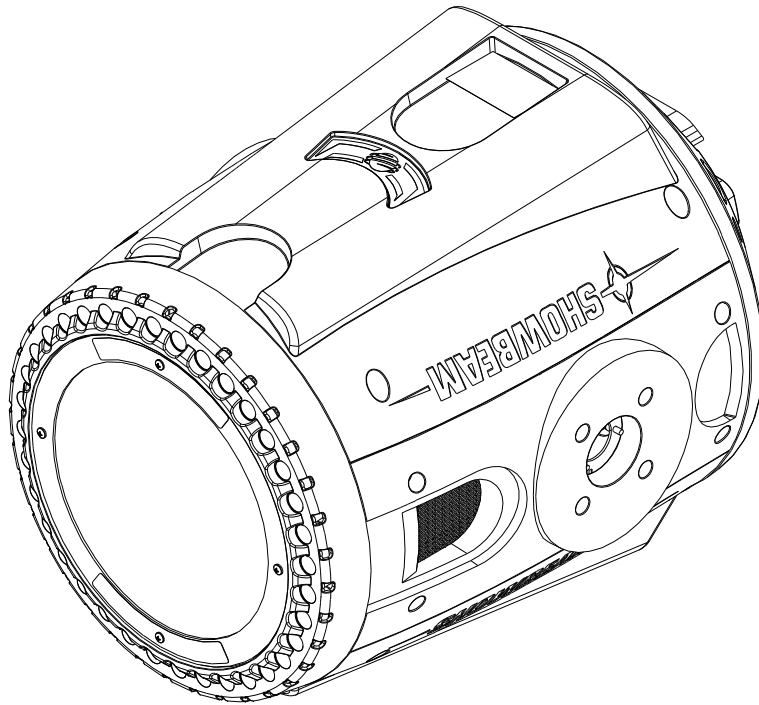


# FOR SERVICE REFERENCE ONLY



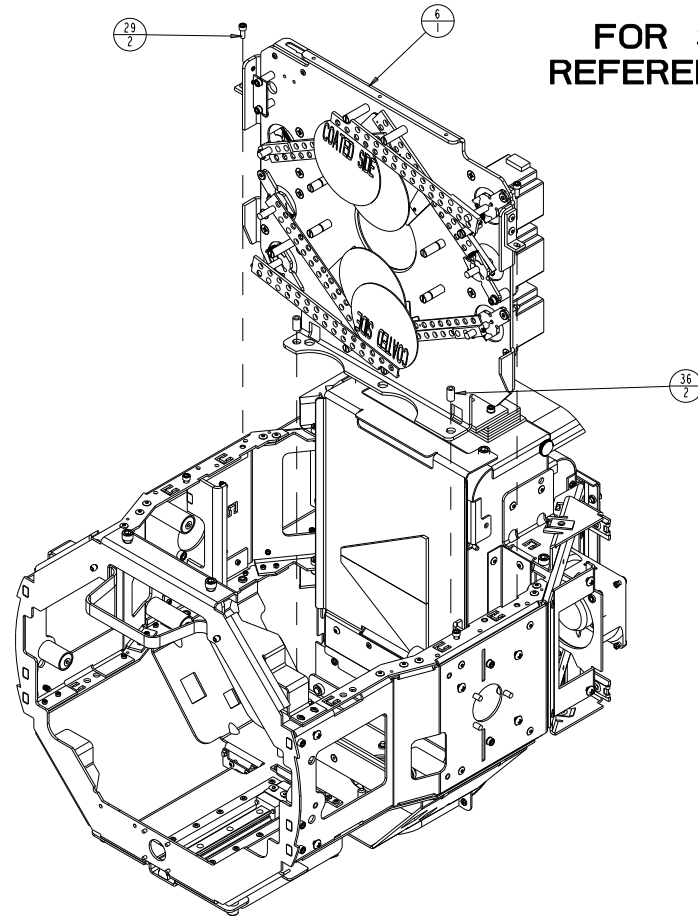
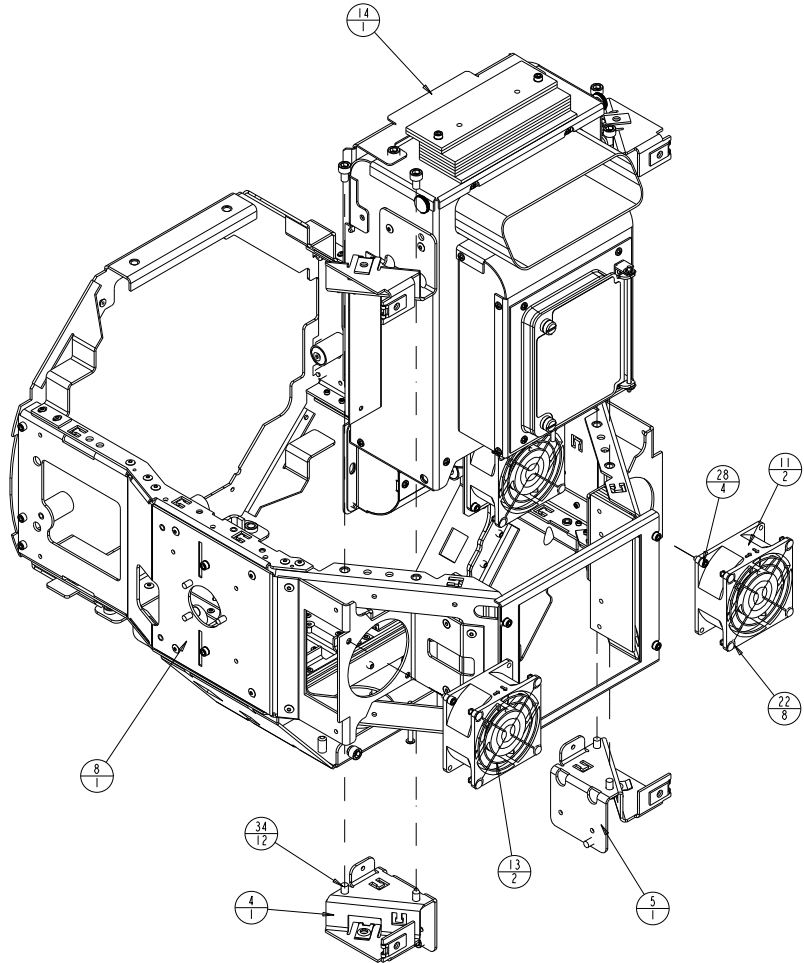
38	1	TQA038	INTERNAL	ZOOM FLICK RIGHT ASSEMBLY
37	1	TQA039	INTERNAL	ZOOM FLICK ASSEMBLY, LEFT
36	4	TUBE .156-280-RUBBER	90717053	TUBE, BUNA-N RUBBER, ID .156, OD .28, BLACK
35	2	TWA210	INTERNAL	SIDE COVER ASM, SG
34	16	SCREWM6AC10SS	91100610	SCREW, M6 SOCKET CAP 10 SS W/PATCH
33	6	SCREWM5AC10SSP	91100510	SCREW, M5 SOCKET CAP 10 SS W/PATCH
32	4	SCREWM4AF25BZ	91040425	SCREW, M4 SOCKET CSNK FLAT 25 BZ W/PATCH
31	6	SCREWM4AF10BZ	91040410	SCREW, M4 SOCKET CSNK FLAT 10 BZ W/PATCH
30	2	SCREWM4AF08BZ	91040408	SCREW, M4 SOCKET CSNK FLAT 08 BZ W/PATCH
29	4	SCREWM4AC10BZP	91050410	SCREW, M4 SOCKET CAP 10 BZ W/PATCH
28	4	SCREWM4AC08SS	91100408	SCREW, M4 SOCKET CAP 08 SS
27	4	SCREWM4AB40SS	91110440	SCREW, M4 BUTTON 40 SS
26	5	SCREWM3AB12SZP	91010312	SCREW, M3 BUTTON SOCKET HEAD 12 BZ, w/PATCH
25	6	SCREWM3AB06BZP	91010306	SCREW, M3 BUTTON SOCKET HD 06 BZ W/PATCH
24	14	SCREW10-16PP500BTYP-SS	90709203	SCREW, 10-16 PHIL PAN 1/2 B TYPE SS
23	2	RIVET-AK54ABS_B	90701161	RIVET, 5/32 CSK .188 - .250 AL BLK PAINT
22	8	RIVET156X460PUSH_NY	90701336	RIVET, 5/32 PUSH .217-.256 NY BL
21	1	TQ508	80450100	RAIL, CARRIAGE ASM, FX ZOOM, IKO LRXDC12
20	1	TQ191	99080391	PLATE, ZOOM GUIDE
19	4	TQ519	90410162	MOUNT, VIBRATION ISOLATION, 1.725LG
18	2	TQ513	90410161	MOUNT, VIBRATION ISOLATION
17	1	MR113	99270084	MOTOR, STEP 2PH MET S17LONG 12.7MM ND NMB
16	1	TQA058	INTERNAL	MODULE, ASM, FLAGS/COLOR WHEEL, SHB
15	1	TK_BLOCK_IKO_LRXDC12	85000272	IKO LRXDC 12 CARRIAGE
14	1	TQA040	INTERNAL	HOUSING, REFLECTOR COMPLETE, SB
13	2	GRILL_80MM-FAN	99190100	GRILL, BLACK, 80MM FAN
12	1	TQA032	80450102	FRONT BEZEL ASSEMBLY, COMPLETE
11	2	TW703	80270038EF	FAN, ASSY, SUNON 80 X80 X38MM 74.5 CFM
10	2	TQ204	INTERNAL	COVER, ASM, HEAD, MAIN, SB
9	2	TWA080	INTERNAL	COUNTERWEIGHT ASSEMBLY, HEAD SG
8	1	TQA055	80110066	CHASSIS, ASM, HEAD, SHB
7	1	TQA063	INTERNAL	BULKHEAD, ASM, FX, SINGLE GOBO, SHB
6	1	TQA048	INTERNAL	BULKHEAD, ASM, DIM/STROBE SB
5	1	TQ194	99260590	BRACKET, LAMP HOUSING MOUNT RH SB
4	1	TQ195	99260591	BRACKET, LAMP HOUSING MOUNT LH SB
3	1	CT413	80040021EF	BOARD, SENSOR MINIATURE ASSY SB/SG
2	2	BLOWER_ASSY_97-97-33MM_W-TACH	80270049EF	BLOWER, ASSY, 24V DC 97 X 95 X 33MM SANYO DENKI
1	1	TWA212	80450093	BEZEL, REAR, HEAD ASM SG SVC
ITEM NO.	QTY.	FILENAME	PART NO.	DESCRIPTION

BILL OF MATERIALS

UNLESS OTHERWISE SPECIFIED:	RELEASE DATE:	CE:	High End	2105 GRACY FARMS LANE AUSTIN, TEXAS 78758	
DIMENSIONAL TOLERANCES:	ENG:	OA:		(512) 836-2242	
0 PLACE DECIMAL = ±0.38	ME:	DRW:		FAK (512) 832-4128	
1 PLACE DECIMAL = ±0.25	MEG:			***** http://www.highend.com	
2 PLACE DECIMALS = ±0.13	DESCRIPTION:	HEAD, ASSEMBLY, SHB			
ANGLES = ±0.5°	FOR PAINTED PARTS REFER TO ENG. SPEC. MANUAL WI-0582	MATERIAL:	FINISH:		
ALL COMPONENTS, MATERIALS AND FINISHES TO BE R&HS COMPLIANT	CHARTED	CHARTED	NA		
MIN. DRAFT	INTERPRET DIMENSIONS PER ASME Y14.5M-1994	SI METRIC	PART NO.	DRAWING NO.	REV.
MIN. RADII	THIRD ANGLE PROJECTION	A1	INTERNAL	TQA004_SVC	
FLATNESS	DIMENSIONS ARE IN MILLIMETERS		DO NOT SCALE	SCALE: 0.167	SHEET: 1 OF 5
THICKNESS					
VOLUME					

**PROPRIETARY NOTICE:**  
THIS DOCUMENT CONTAINS CONFIDENTIAL AND PROPRIETARY INFORMATION OF HIGH END SYSTEMS INC., (ALSO DBA LIGHTWAVE RESEARCH) AND IS GIVEN TO THE RECEIVER IN CONFIDENCE. THE RECEIVER ACCEPTS AND AGREES THAT, EXCEPT AS AUTHORIZED BY HIGH END SYSTEMS, THE RECEIVER WILL NOT PERMIT THE USE OF THE DOCUMENT OR ANY COPY THEREOF OR THE INFORMATION THEREIN, WILL NOT COPY OR PERMIT COPYING THE DOCUMENT OR THE INFORMATION THEREIN, AND WILL UPON COMPLETION OF THE NEED TO RETAIN THE DOCUMENT, OR UPON DEMAND, RETURN THE DOCUMENT WITHOUT RETAINING ANY OF THE INFORMATION CONTAINED THEREIN IN ANY FORM WHATSOEVER.

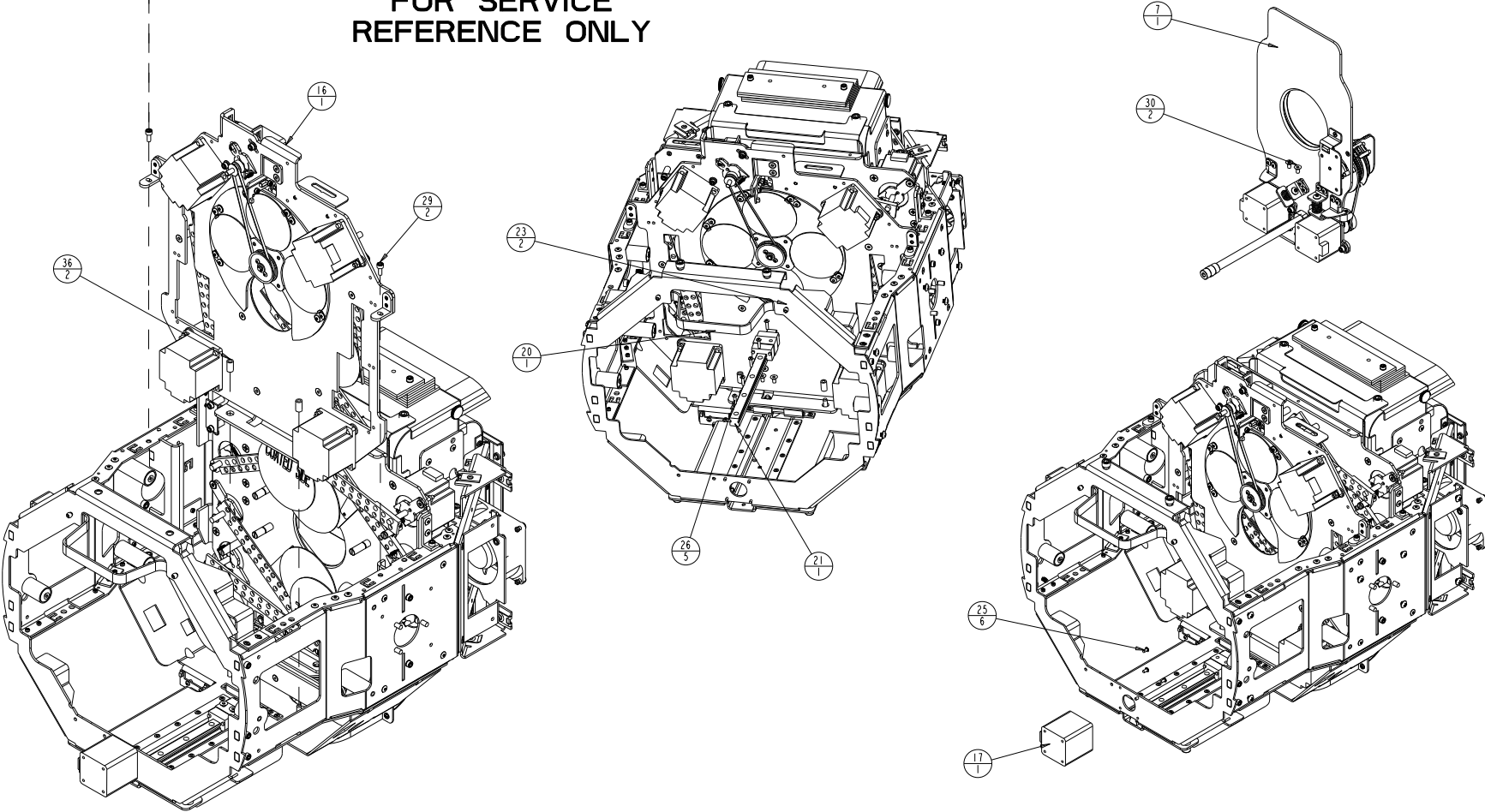
**FOR SERVICE  
REFERENCE ONLY**



UNLESS OTHERWISE SPECIFIED:		RELEASE DATE:	CE:	High End 2105 GRACY FARMS LANE AUSTIN, TEXAS 78758 (512) 836-2242 FAX (512) 832-4128 http://www.highend.com	LR LIGHTWAVE RESEARCH
DIMENSIONAL TOLERANCES:		ENG:	OA:		
0 PLACE DECIMAL = ±0.38		ME:	DRW:	DESCRIPTION:	
1 PLACE DECIMAL = ±0.25		MATERIAL:		HEAD, ASSEMBLY, SHB	
2 PLACE DECIMALS = ±0.13		FINISH:		NA	
ANGLES = ±0.5°		MATERIAL:		CHARTED	
FOR PAINTED PARTS REFER TO ENG. SPEC. MANUAL WI-0592		MATERIAL:		CHARTED	
ALL COMPONENTS, MATERIALS AND FINISHES TO BE R6HS COMPLIANT		MATERIAL:		CHARTED	
MIN. DRAFT	INTERPRET DIMENSIONS PER ASME Y14.5M-1994	SI METRIC A1	PART NO. INTERNAL	DRAWING NO. TQA004_SVC	REV.
MIN. RADIUS	THIRD ANGLE PROJECTION		DO NOT SCALE	SCALE: 0.167	SHEET: 2 OF 5
FLATNESS	DIMENSIONS ARE IN MILLIMETERS				
THICKNESS					
VOLUME					

**PROPRIETARY NOTICE:**  
THIS DOCUMENT CONTAINS CONFIDENTIAL AND PROPRIETARY INFORMATION OF HIGH END SYSTEMS INC., (ALSO DBA LIGHTWAVE RESEARCH) AND IS GIVEN TO THE RECEIVER IN CONFIDENCE. THE RECEIVER ACCEPTS AND AGREES THAT, EXCEPT AS AUTHORIZED BY HIGH END SYSTEMS, THE RECEIVER WILL NOT PERMIT THE USE OF THE DOCUMENT OR ANY COPY THEREOF OR THE INFORMATION THEREIN, WILL NOT COPY OR PERMIT COPYING THE DOCUMENT OR THE INFORMATION THEREIN, AND WILL UPON COMPLETION OF THE NEED TO RETAIN THE DOCUMENT, OR UPON DEMAND, RETURN THE DOCUMENT WITHOUT RETAINING ANY OF THE INFORMATION CONTAINED THEREIN IN ANY FORM WHATSOEVER.

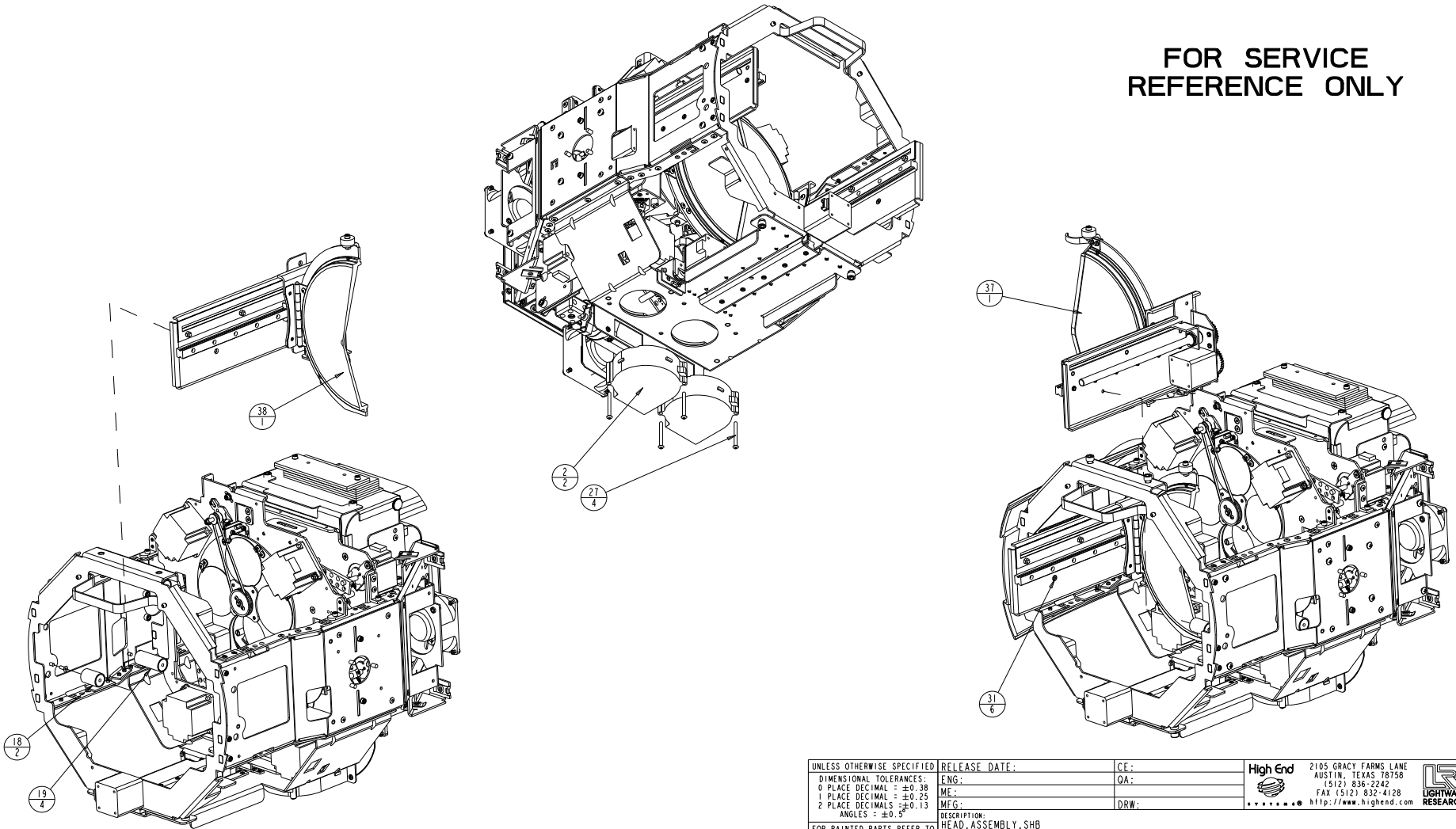
FOR SERVICE  
REFERENCE ONLY



UNLESS OTHERWISE SPECIFIED DIMENSIONAL TOLERANCES: 0 PLACE DECIMAL = ±0.38 1 PLACE DECIMAL = ±0.25 2 PLACE DECIMALS = ±0.13 ANGLES = ±0.5°	RELEASE DATE:	CE:	<b>High End</b> 2105 GRACY FARMS LANE AUSTIN, TEXAS 78758 (512) 836-2242 FAX (512) 832-4128 ***** <a href="http://www.highend.com">http://www.highend.com</a>		
	ENG:	OA:			
	ME:	DRW:			
	MEG:				
FOR PAINTED PARTS REFER TO ENG. SPEC. MANUAL WI-0592 ALL COMPONENTS, MATERIALS AND FINISHES TO BE RHS COMPLIANT	DESCRIPTION: HEAD, ASSEMBLY, SHB	MATERIAL: CHARTED	FINISH: NA		
MIN. DRAFT MIN. RADIUS FLATNESS THICKNESS VOLUME	INTERPRET DIMENSIONS PER ASME Y14.5M-1994 THIRD ANGLE PROJECTION DIMENSIONS ARE IN MILLIMETERS		PART NO. <b>INTERNAL TQA004_SVC</b>	DRAWING NO. <b>TQA004_SVC</b>	REV.
	DO NOT SCALE	SCALE: 0.167	SHEET: 3 OF 5		

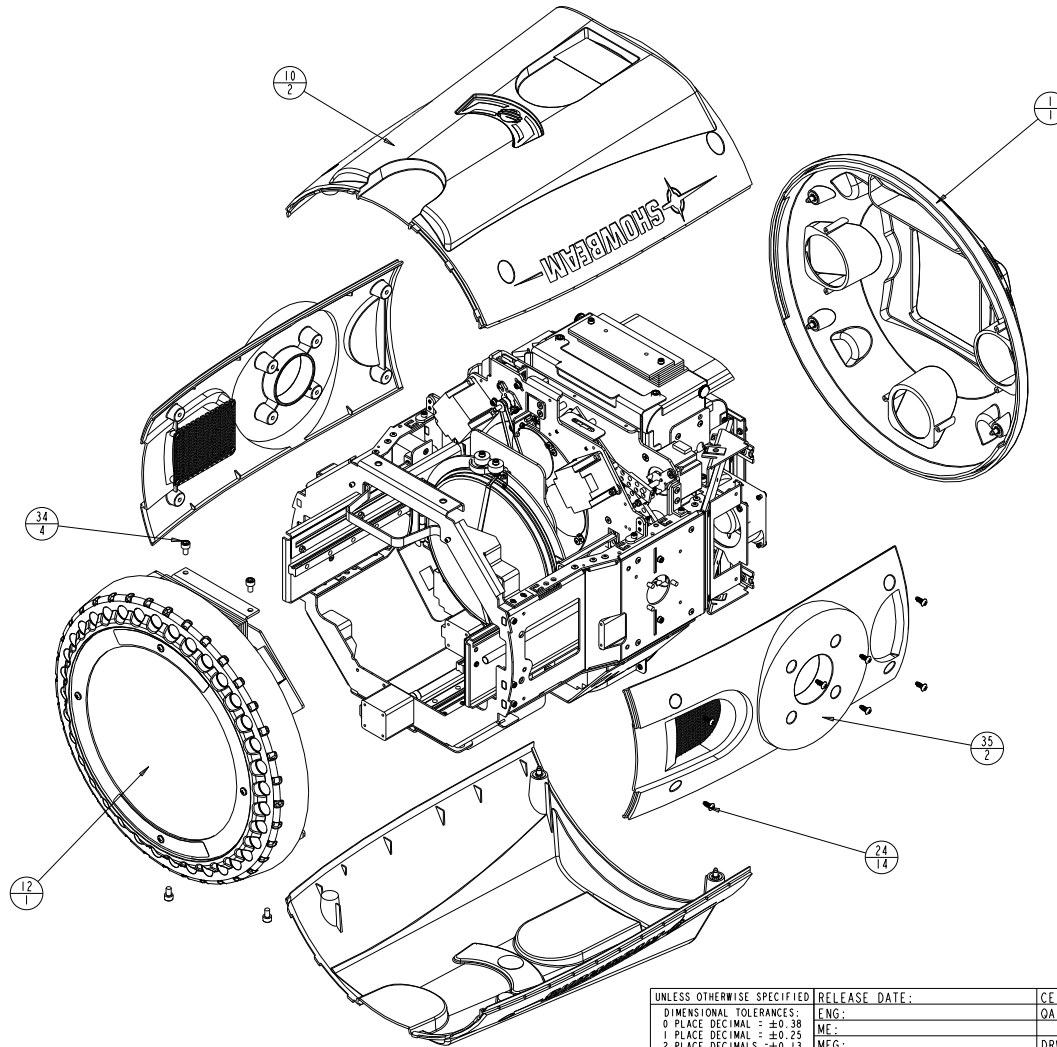
**PROPRIETARY NOTICE:**  
 THIS DOCUMENT CONTAINS CONFIDENTIAL AND PROPRIETARY INFORMATION OF HIGH END SYSTEMS INC., (ALSO DBA LIGHTWAVE RESEARCH) AND IS GIVEN TO THE RECEIVER IN CONFIDENCE. THE RECEIVER ACCEPTS AND AGREES THAT, EXCEPT AS AUTHORIZED BY HIGH END SYSTEMS, THE RECEIVER WILL NOT PERMIT THE USE OF THE DOCUMENT OR ANY COPY THEREOF OR THE INFORMATION THEREIN, WILL NOT COPY OR PERMIT COPYING THE DOCUMENT WILL NOT DISCLOSE TO OTHERS EITHER THE DOCUMENT OR THE INFORMATION THEREIN, AND WILL UPON COMPLETION OF THE NEED TO RETAIN THE DOCUMENT, OR UPON DEMAND, RETURN THE DOCUMENT WITHOUT RETAINING ANY OF THE INFORMATION CONTAINED THEREIN IN ANY FORM WHATSOEVER.

FOR SERVICE  
REFERENCE ONLY



**PROPRIETARY NOTICE:**  
THIS DOCUMENT CONTAINS CONFIDENTIAL AND PROPRIETARY INFORMATION OF HIGH END SYSTEMS INC., (ALSO DBA LIGHTWAVE RESEARCH) AND IS GIVEN TO THE RECEIVER IN CONFIDENCE. THE RECEIVER ACCEPTS AND AGREES THAT, EXCEPT AS AUTHORIZED BY HIGH END SYSTEMS, THE RECEIVER WILL NOT PERMIT THE USE OF THE DOCUMENT OR ANY COPY THEREOF OR THE INFORMATION THEREIN, WILL NOT COPY OR PERMIT COPYING THE DOCUMENT WILL NOT DISCLOSE TO OTHERS EITHER THE DOCUMENT OR THE INFORMATION THEREIN, AND WILL UPON COMPLETION OF THE NEED TO RETAIN THE DOCUMENT, OR UPON DEMAND, RETURN THE DOCUMENT WITHOUT RETAINING ANY OF THE INFORMATION CONTAINED THEREIN IN ANY FORM WHATSOEVER.

UNLESS OTHERWISE SPECIFIED	RELEASE DATE:	CE:	High End	2105 GRACY FARMS LANE AUSTIN, TEXAS 78758 (512) 836-2242 FAX (512) 832-4128 http://www.highend.com	
DIMENSIONAL TOLERANCES: 0 PLACE DECIMAL = ±0.38 1 PLACE DECIMAL = ±0.25 2 PLACE DECIMALS = ±0.13 ANGLES = ±0.5°	ENG:	OA:	MEG:	DRW:	
FOR PAINTED PARTS REFER TO ENG. SPEC. MANUAL WI-0582	MATERIAL:	FINISH:			
ALL COMPONENTS, MATERIALS AND FINISHES TO BE RSHS COMPLIANT	CHARTED	NA			
MIN. DRAFT	INTERPRET DIMENSIONS PER ASME Y14.5M-1994		PART NO.	DRAWING NO.	REV.
MIN. RADIUS	THIRD ANGLE PROJECTION		INTERNAL	TQA004_SVC	
FLATNESS	DIMENSIONS ARE IN MILLIMETERS	DO NOT SCALE	SCALE: 0.167	SHEET: 4 OF 5	
THICKNESS					
VOLUME					



FOR SERVICE  
REFERENCE ONLY

**PROPRIETARY NOTICE:**  
THIS DOCUMENT CONTAINS CONFIDENTIAL AND PROPRIETARY INFORMATION OF HIGH END SYSTEMS INC., (ALSO DBA LIGHTWAVE RESEARCH) AND IS GIVEN TO THE RECEIVER IN CONFIDENCE. THE RECEIVER ACCEPTS AND AGREES THAT, EXCEPT AS AUTHORIZED BY HIGH END SYSTEMS, THE RECEIVER WILL NOT PERMIT THE USE OF THE DOCUMENT OR ANY COPY THEREOF OR THE INFORMATION THEREIN, WILL NOT COPY OR PERMIT COPYING THE DOCUMENT OR THE INFORMATION THEREIN, AND WILL UPON COMPLETION OF THE NEED TO RETAIN THE DOCUMENT, OR UPON DEMAND, RETURN THE DOCUMENT WITHOUT RETAINING ANY OF THE INFORMATION CONTAINED THEREIN IN ANY FORM WHATSOEVER.

UNLESS OTHERWISE SPECIFIED: DIMENSIONAL TOLERANCES: 0 PLACE DECIMAL = ±0.38 1 PLACE DECIMAL = ±0.25 2 PLACE DECIMALS = ±0.13 ANGLES = ±0.5°	RELEASE DATE:	CE:	High End 2105 GRACY FARMS LANE AUSTIN, TEXAS 78758 (512) 836-2242 FAX (512) 832-4128 ***** http://www.highend.com	
	ENG:	OA:		
	ME:	DRW:		
	DESCRIPTION: HEAD, ASSEMBLY, SHB	MATERIAL: CHARTED		
FOR PAINTED PARTS REFER TO ENG. SPEC. MANUAL WI-0582 ALL COMPONENTS, MATERIALS AND FINISHES TO BE RSHS COMPLIANT	INTERPRET DIMENSIONS PER ASME Y14.5M-1994 THIRD ANGLE PROJECTION DIMENSIONS ARE IN MILLIMETERS	PART NO. <b>INTERNAL TQA004_SVC</b>	DRAWING NO. TQA004_SVC	REV. 5 OF 5